

### Stylish Design



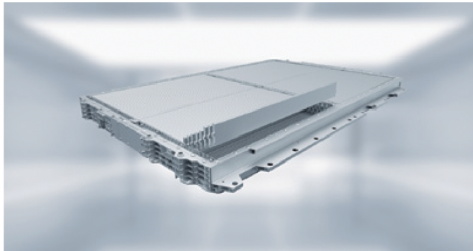
### Exciting Interior



### Ocean-Inspired Fin Design



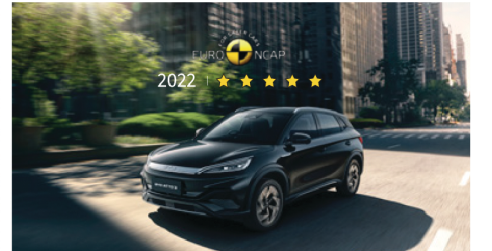
### Ultra-Safe Patented Blade Battery Technology



### Bigger Rotating Display



### Euro NCAP Five-Star Rating



## The New BYD ATTO 3 SPECIFICATIONS

Specifications	
Overall length (mm)	4,455
Overall width (mm)	1,875
Overall height (mm)	1,615
Wheel track - front / rear (mm)	1,575/1,580
Wheelbase (mm)	2,720
Ground clearance unladen (mm)	175
Luggage capacity - Min (L)	440
Luggage capacity - Max (L)	1,340
Kerb weight (kg)	1,750
Gross vehicle mass (kg)	2,160
Powertrain	
Motor type	Permanent magnet synchronous motor
Maximum power (kW)	150
Maximum torque (N.m)	310
Performance	
Acceleration 0-100km/h (s)	7.3
Driving range: NEDC (km)	480
Driving range: WLTP Combined (km)	420
Seating capacity	5
Battery	
Battery type	BYD Blade Battery
Battery capacity (kWh)	60.48
Suspension	
Front suspension	Macpherson strut
Rear suspension	Multi-link
Brake	
Front	Ventilated disc
Rear	Disc
Tyre	
Wheel type	Alloy
Tyre size	235/50 R18

VTOL discharge adapter	•
Regenerative braking	•
Exterior	
Panoramic sunroof with electric slide and anti-trap	•
Electric unlock tailgate	•
One-touch open / close tailgate	•
Roof rails	•
Electrically heated and adjustable exterior mirrors	•
Electrically retractable exterior mirrors	•
Interior	
Steering wheel mounted controls - audio, phone, ACC and multi-function display	•
Electric power assisted steering system	•
5" digital instrument panel	•
Synthetic leather seat	•
60/40 split fold rear seats	•
6-way power adjustment - driver seat	•
4-way power adjustment - front passenger seat	•
ISOFIX child restraint anchorage points (outer rear seats)	•
Safety	
Front airbags - driver & front passenger	•
Side airbags - driver & front passenger	•
Side curtain airbags - front & rear	•
Far-side airbag - driver	•
Seat belt reminder - front & rear	•
360° view monitor	•
Tyre Pressure Monitoring System (TPMS)	•
Front 2 radars (Parking Sensor)	•
Rear 4 radars (Parking Sensor)	•
Auto hold	•
Electric Parking Brake System (EPB)	•
Anti-Lock Braking System (ABS)	•
Electronic Stability Control (ESC)	•
Traction Control System (TCS)	•
Electronic Brake Force Distribution (EBD)	•
Hill Decent Control (HDC)	•
Stop & Go Full Speed Adaptive Cruise Control (ACC-S&G)	•
Automatic Emergency Braking System (AEB)	•

Front Collision Warning (FCW)	•
Rear Collision Warning (RCW)	•
Blind Spot Detection (BSD)	•
Door Open Warning (DOW)	•
Rear Cross Traffic Alert (RCTA)	•
Light	
LED headlight	•
Follow me home headlight	•
Adaptive Front Light (AFL)	•
LED rear light	•
Multi-color gradient ambient lighting	•
Multi-color gradient ambient lighting with music rhythm - door handle	•
Entertainment	
FM radio	•
*Bluetooth® phone connectivity and audio streaming	•
15.6" intelligent rotating touch screen	•
*Dirac HD sound™, 8 speakers	•
*Apple CarPlay® (wireless) and Android Auto™ (wireless)	•
Voice assistant - English	•
*Satellite navigation	•
*Music streaming	•
USB - C port x1 + USB - A port x1, centre console	•
USB - C port x1 + USB - A port x1, rear	•
Comfort & Convenience	
Wireless phone charger	•
12V socket	•
Keyless entry & Keyless start	•
Portable card key	•
4-door window one touch up-down with anti-pinch	•
Centre console storage compartment	•
Emergency kit with warning triangle and safety vest	•
Tyre repair kit	•
Air Conditioning	
Automatic air-conditioning	•
Heat pump	•
CN95 air filter	•
PM 2.5 air filter (display value)	•

## CONFIGURATIONS

New Energy	
Portable charging cable (mode 2)	•
AC charging port - Type 2	•
DC charging port - CCS 2 (88kW)	•
VTOL mobile power supply function	•

## BODY COLOR



## INTERIOR COLOR



## DIMENSIONS



\*Note:  
 ● The real range is influenced by many factors such as individual driving style, load, traffic etc. The declared range is estimated for reference only.  
 ● Bluetooth® is a registered trademark of Bluetooth SIG, Inc. Compatibility and functionality varies depending on device.  
 ● Apple CarPlay® is a registered trademark of Apple Inc. Requires compatible device, wireless connection.  
 ● Android Auto™ is a registered trademark of Google Inc. Requires compatible device, wireless connection.  
 ● Disc HD sound® is a registered trade mark of Dirac Research AB.  
 ● BYD provides free map update for 3 years.  
 ● Music streaming requires data usage or over Wi-Fi.  
 ● Colors depicted are a guide only and may vary from actual colors due to the printing.  
 ● Driving assist system are not a substitute for the driver's responsibility of the vehicle.  
 ● BYD reserves the right to vary vehicle specifications and standard features from those detailed in this brochure.

PRICE PACKAGE		The New BYD ATTO 3	
		Personal	Company
RECOMMENDED RETAIL PRICE (RRP)		RM149,800	RM149,800
ROADTAX (1 YEAR)		<b>Exempted*</b> *Subject to government BEV Roadtax policy.	
REGISTRATION FEES		RM300	RM500
HP OWNERSHIP ENDORSEMENT FEES		RM50	
EV PLATE FEES (INCLUDING BASE PLATE)*		RM150*	*Additional charges apply for express service from the government appointed supplier.
INSPECTION FEES (B2)		RM200	
ON-THE-ROAD PRICE (WITHOUT INSURANCE)		RM150,500	RM150,700
SERVICE PACKAGE			
STANDARD	3 YEARS or 60,000km**	RM1,688	
	6 YEARS or 120,000km**	RM3,888	
	8 YEARS or 160,000km**	RM4,888	
		<b>Include:</b> Reducer Oil Service, Air Conditioning Filter Service, Brake Fluid Service, Drive Motor Coolant Service, Air Conditioning Refrigerant Service.	
PLUS	6 YEARS or 120,000km**	RM11,888	
	8 YEARS or 160,000km**	RM17,888	
		<b>Additional:</b> Tyre Alignment, Balancing and Rotation NEW! Windscreen Washer Fluid Replacement, Wiper Blades Replacement (Front & Rear), Remote Control Battery, 12V Battery Replacement annually NEW, Brake Pads Replacement (Front & Rear), Brake Discs Replacement (Front & Rear).	

## WARRANTY PACKAGE

**6 YEARS or 150,000km\*\***

Vehicle Warranty

**8 YEARS or 160,000km\*\***

High-Voltage Blade Battery Warranty

**8 YEARS or 150,000km\*\***

Drive Unit Warranty  
(Motor, Motor Controller, DC Assembly, High Voltage, Electric Control Assembly)

**3 YEARS or 60,000km\*\***

- Multimedia System
- Shock Absorber
- Dust Cover
- Bushing or Gasket
- Wheel Bearing
- PM2.5 Measuring Instrument
- AC/DC Charging Port Assembly
- USB Charging Port Connector

**4 YEARS or 100,000km\*\***

- Whole Vehicle Lights
- Tyre Pressure Monitoring Module
- Suspension
- Ball Joint

**\*Terms & Conditions:**

- 1) Sime Darby Beyond Auto reserves all rights to change the Recommended Retail Price and specifications of the car.
- 2) Registration fees above is for Malaysian. Non-Malaysian fees are varied from above.
- 3) Prices are valid in Peninsular Malaysia, except Langkawi.
- 4) Prices are effective from 9 September 2024, based on the Recommended Retail Price, without insurance.
- 5) The offer above is not applicable with other promotions, unless stated otherwise.
- 6) Terms & conditions apply.

**\*\* Terms & Conditions Apply.** Prices will remain valid until a written notice or new price list is issued by Sime Darby Beyond Auto. Sime Darby Beyond Auto reserves the right to change prices without prior notice.